



Fire Safety Policy Selsdon Primary School

Updated January 2026

Aims

It's the aim of Selsdon Primary School to minimise risks to staff and pupils which may arise from fire. This will be achieved by the carrying out of procedures set out in this policy.

Responsibility for Fire Safety Matters

Headteacher Hugo Feitor has delegated the responsibility for fire safety matters to Site Manager Jacques De Winnaar. He will report any urgent issues to the Headteacher and the Leadership Team to relay any relevant information to staff as required. Any paperwork relating to maintenance is kept in school 'Fire File' in the caretakers' office. A fire risk assessment will be carried out every 12 months or sooner if changes are made to building layout.

School Fire Evacuation Procedure

Notices displaying the evacuation procedure will be placed around school and next to every call point in a standard form.

Responsibility of School Staff

All school staff are responsible for fire safety in their area of the school. Staff ensure fire exits are clear fire doors are kept closed and report any concerns they have via 'Freshdesk' the online reporting system which is accessible to all staff. Staff will ensure that the children in their care are aware what to do in the event of a fire and escort them to the correct assembly point via the nearest fire exit door. Any staff or pupils with reduced mobility will have a PEEP and provision put in place for a buddy to assist them moving around, and evacuating, the building.

Fire Training and Fire Drills

Training will be provided for Fire Wardens at both schools every two years and general fire safety awareness will be provided at an INSET day for all other staff every September.

Records of training will be kept in the fire file which is kept in caretaker's office at both schools. Any new or temporary staff will be made aware of procedures and invited to read a copy of Emergency Escape Plan. A copy of the Emergency Escape Plan is available in each Staffroom for people to read.



Contractors Working on Site

Contractors working on site are made aware of fire exits and assembly points. Any hot works carried out will be done after school hours or during the school holidays to reduce the risk. Hot works permits to be completed, and copy kept in Fire File.

Maintenance of Fire Doors Equipment and Systems

The fire alarm, fire extinguisher and emergency lighting are maintained under contract with City Fire protection who attend at the following intervals.

Fire Alarm System: every six months

Fire Extinguishers: every 12 months

Emergency Lighting: every 6 months

The premises staff carry out the following checks

System	Frequency	Method of Test
Fire Alarm	Weekly	3 call points tested each week with key and recorded.
Fire Alarm	Daily	Visual check for any error of fault lights.
Emergency Lighting	Monthly	4 lights tested each month.
Fire Extinguishers Fire Blankets.	Weekly	Visual check for seals and misuse. Replace with spare on site and order replacement if required
Fire Doors	Weekly	Check all doors are closing and report and problems for repair
Corridors and Escape Routes and Doors	Daily	Fire exit doors that are locked when building is closed are opened before school is occupied.
Fire Exit doors	Weekly	Check doors open ok seals are intact and report any problems and advise staff if required.

Records of all tests above will be recorded and be available for inspection in the Fire File in the caretaker's office at each school.

School Letting and School Events Out of School Hours

There will always be a trained member of school staff on site during lets or school events outside school hours to make people on site aware of fire exits and assembly points.

Roles and Responsibilities

Class teachers are responsible for children in their class assisted by Teaching Assistants, if available. Classroom and area outside classroom should be checked by the class teacher. The teacher is responsible for taking the class iPad to the assembly point for the roll call.

Selsdon Primary School and Nursery

Caring, learning, aspiring, succeeding



Classroom staff should promote fire awareness amongst the pupils by talking to them about keeping fire exits clear and reporting fires to adults. A good time to do this would be after each fire drill/evacuation.

During an evacuation these staff are responsible for the following:

- **Teaching Assistants and/or teachers in Year 4** to check staff room and detention and the Sports changing room on the way downstairs.
- **Teaching Assistants and/or teachers in Year 5 and 6** to check the IT & finance offices upstairs, the staff toilets next to these offices, and the Rainbow Room on the way downstairs.
- **Cook/Assistant Cook** to check that the kitchen is clear and that temporary staff are directed to the assembly point.
- **Front office staff** to check the foyer, photocopy room and adult toilet.
- **Members of Leadership Team on site** to check the disabled toilet, three sets of children's toilets and the small offices/PTA room. They should then head to the assembly points to liaise with the Fire Brigade in the top carpark.
- **Member of Leadership team to call Fire Brigade** if fire confirmed.
- **Premises staff (Caretaker/Site Manager)** to check the fire alarm panel to identify what zone has been activated. With another member of staff, check for fire/false alarm, if safe to do so.
- **If premises staff are not on site** the fire alarm check, and follow up, will be made by a member of the Leadership Team.

Review of Policy

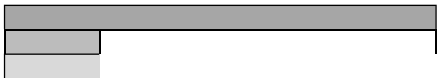
This policy will be reviewed every 12 months or sooner if any significant changes in legislation occur.

Policy review date November 2026

Selsdon Primary School and Nursery

Caring, learning, aspiring, succeeding

MAP DISPLAYING FIRE ASSEMBLY POINTS



KEY
ROAD NAMES
ASSEMBLY POINTS

Selsdon Primary School and Nursery

Caring. learning. aspiring. succeeding



SITE MAP

NAME	Selsdon Primary School	SITE TEL. NO.	020 8657 4038
ADDRESS	Addington Rd, South Croydon CR2 8LQ	SURVEY DATE	January 2019
		SITE MANAGER	Jacques De Winnaar

INFORMATION

This plan is not necessarily to scale and is provided merely for reference purposes. The actual locations of individual devices are not shown on this site map – see site manager for more detailed plans.	
© 2017 Alfonso Greenbrook : 07415 649867	www.alfonsogreenbrook.wixsite.com/portfolio : alfonsogreenbrook@gmail.com



Selsdon Primary School Fire Maps

Map 1:

Map displaying call points and fire detection equipment: Block A and B

Map 2:

Map displaying call points and fire detection equipment: Block A

Map 3:

Map displaying fire alarm panels, call points and fire detection equipment: Block C, D, E and F

Map 4:

Map displaying fire exits and emergency lighting: Block A and B

Map 5:

Map displaying fire exits and emergency lighting: Block A

Map 6:

Map displaying fire exits and emergency lighting: Block C, D, E and F

Map 7:

Map displaying firefighting equipment: Block A and B

Map 8:

Map displaying firefighting equipment: Block A

Map 9:

Map displaying firefighting equipment: Block C, D, E and F

Map 10:

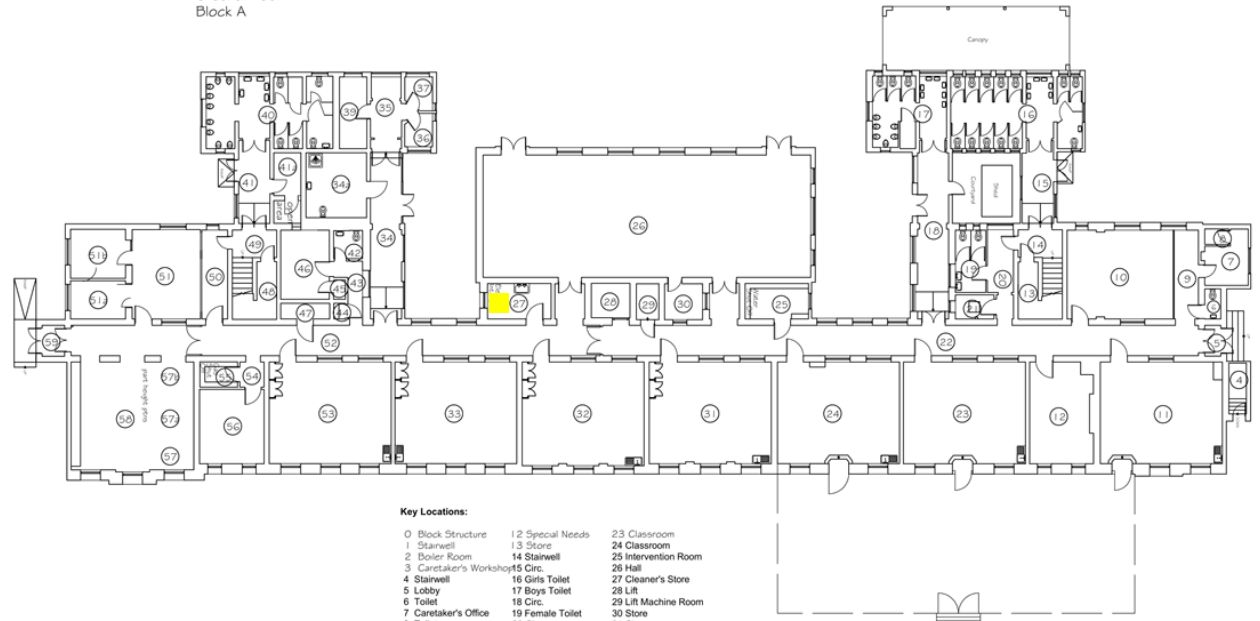
Map displaying gas shutoff, electrical shut off switch and hazardous substances: Block A, C and F



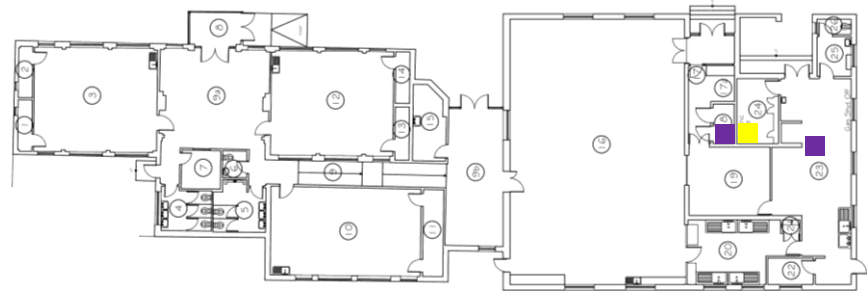
MAP DISPLAYING GAS SHUTOFF, ELECTRICAL SHUT OFF SWITCH AND

SELSDON PRIMARY SCHOOL

Ground Floor
Block A



- Key Locations:**
- 0 Block Structure
 - 1 Stairwell
 - 2 Boiler Room
 - 3 Caretaker's Workshop
 - 4 Stairwell
 - 5 Lobby
 - 6 Toilet
 - 7 Caretaker's Office
 - 8 Toilet
 - 9 Circ.
 - 10 Computer Room
 - 11 Classroom
 - 12 Special Needs
 - 13 Store
 - 14 Stairwell
 - 15 Circ.
 - 16 Girls Toilet
 - 17 Boys Toilet
 - 18 Circ.
 - 19 Female Toilet
 - 20 Circ.
 - 21 Server Room
 - 22 Circ.
 - 23 Classroom
 - 24 Classroom
 - 25 Intervention Room
 - 26 Hall
 - 27 Cleaner's Store
 - 28 Lift
 - 29 Lift Machine Room
 - 30 Store
 - 31 Classroom
 - 32 Classroom
 - 33 Classroom

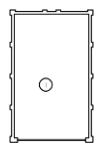


SELSDON PRIMARY SCHOOL

Ground Floor
Block C

SELSDON PRIMARY SCHOOL

Ground Floor
Garage
Block F



KEY	
	ELECTRIC SWITCH
	GAS SHUT OFF
	HAZARDOUS SUBSTANCES (PETROL)

SITE MAP			
NAME	Selsdon Primary School	SITE TEL. NO.	020 8657 4038
ADDRESS	Addington Rd, South Croydon CR2 8LQ	SURVEY DATE	January 2019
		SITE MANAGER	Scott Greenbrook

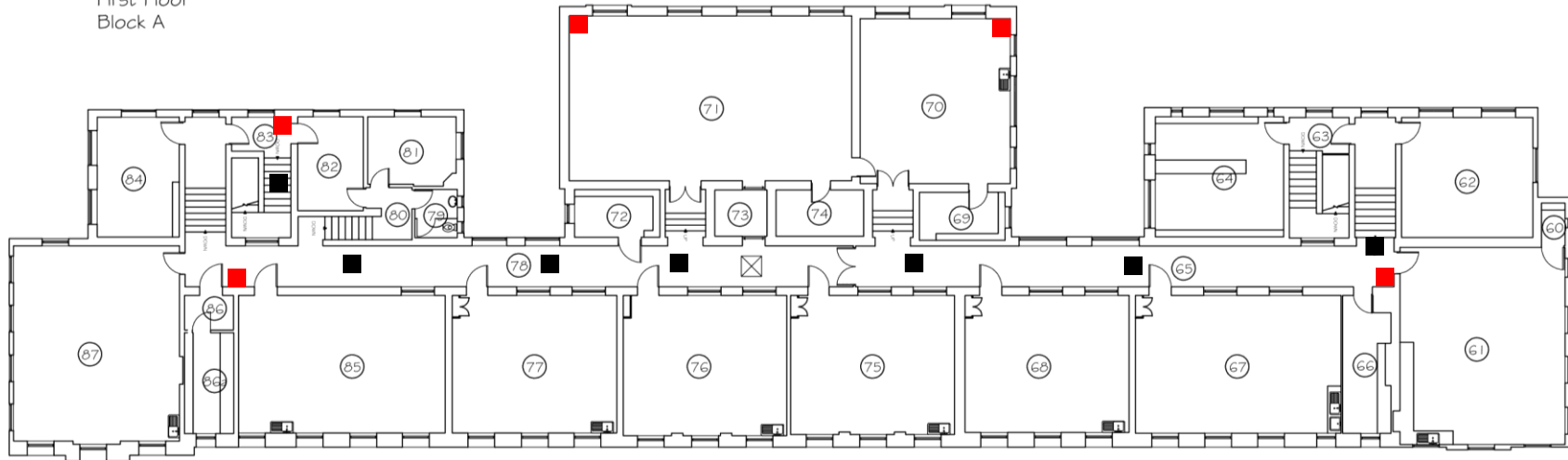
INFORMATION	
This plan is not necessarily to scale and is provided merely for reference purposes. The actual locations of individual devices are not shown on this site map – see site manager for more detailed plans.	
© 2019 Alfonso Greenbrook MOB: 07415 649667	www.alfonsogreenbrook.wixsite.com/portfolio EMAIL: alfonsogreenbrook@gmail.com



MAP DISPLAYING CALL POINTS AND FIRE DETECTION EQUIPMENT

SELSTON PRIMARY SCHOOL

First Floor
Block A



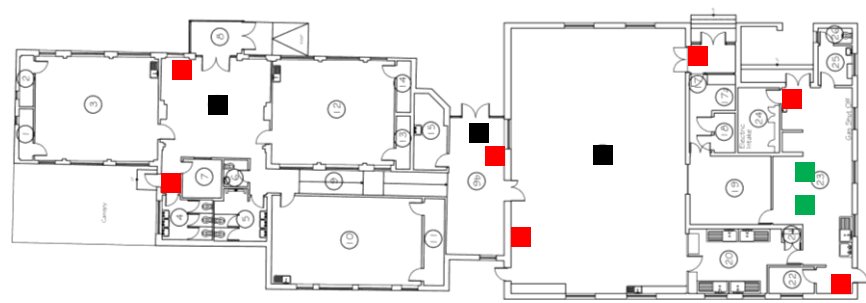
KEY	
■	CALL POINTS
■	SMOKE DETECTOR

SITE MAP			
NAME	Selston Primary School	SITE TEL. NO.	020 8657 4038
ADDRESS	Addington Rd, South Croydon	SURVEY DATE	January 2019
CR2 8LQ	SITE MANAGER	Scott Greenbrook	

INFORMATION
This plan is not necessarily to scale and is provided merely for reference purposes. The actual locations of individual devices are not shown on this site map – see site manager for more detailed plans.
© 2019 Alfons Greenbrook : 07415 649867
www.alfonsgreenbrook.wixsite.com/portfolio : alfonsgreenbrook@gmail.com

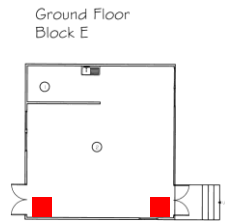


MAP DISPLAYING FIRE ALARM PANELS, CALL POINTS AND FIRE

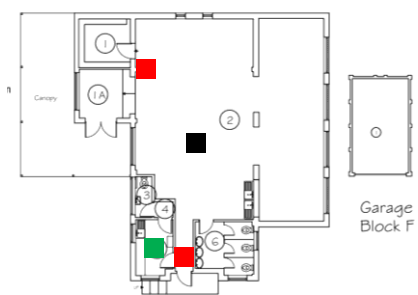


SELSDON PRIMARY SCHOOL
Ground Floor
Block C

SELSDON PRIMARY SCHOOL



SELSDON PRIMARY SCHOOL
Ground Floor
Block D



KEY	
	MAIN FIRE ALARM PANEL
	LOCAL FIRE ALARM PANEL
	CALL POINTS
	SMOKE DETECTOR
	HEAT DETECTOR

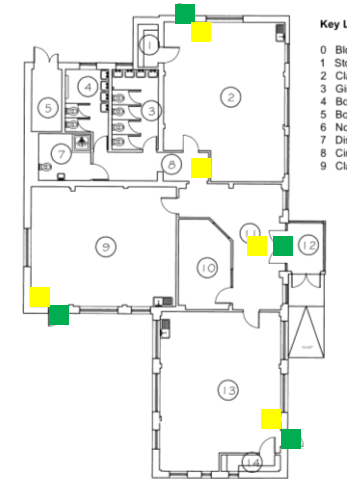
SITE MAP			
NAME	Selsdon Primary School	SITE TEL. NO.	020 8657 4038
ADDRESS	Addington Rd, South Croydon	SURVEY DATE	January 2019
CR2 8LQ	SITE MANAGER	Scott Greenbrook	

INFORMATION
This plan is not necessarily to scale and is provided merely for reference purposes. The actual locations of individual devices are not shown on this site map – see site manager for more detailed plans.
© 2019 Alfonso Greenbrook MOB: 07415 64867
www.alfonsogreenbrook.wixsite.com/portfolio EMAIL: alfisogreenbrook@gmail.com

MAP DISPLAYING FIRE EXITS AND EMERGENCY LIGHTING

SELSDON PRIMARY SCHOOL

Ground Floor
Block A



Key L

- 0 Bt
- 1 St
- 2 Cl
- 3 Gi
- 4 Bc
- 5 Bc
- 6 Nc
- 7 Dr
- 8 Cl
- 9 Cl

SELSDON PRIMARY SCHOOL

Ground Floor
Block B

KEY	
	FIRE EXITS
	EMERGENCY LIGHTS

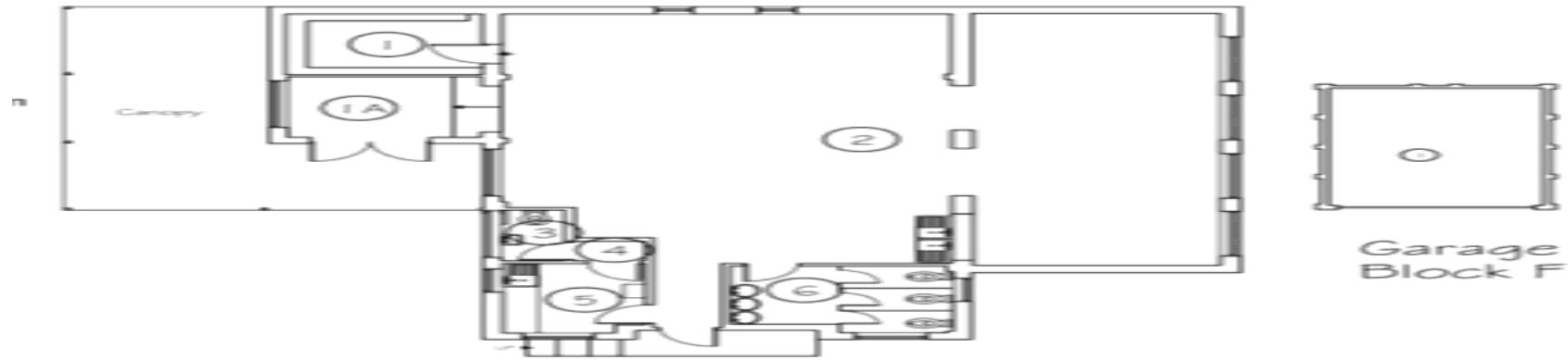
SITE MAP			
NAME	Selsdon Primary School	SITE TEL. NO.	020 8657 4038
ADDRESS	Addington Rd, South Croydon	SURVEY DATE	January 2019
	CR2 8LQ	SITE MANAGER	Scott Greenbrook

INFORMATION	
This plan is not necessarily to scale and is provided merely for reference purposes. The actual locations of individual devices are not shown on this site map - see site manager for more detailed plans.	
© 2019 Alfnso Greenbrook : 07415 649867	www.alfnsogreenbrook.wixsite.com/portfolio : alfnsogreenbrook@gmail.com

MAP DISPLAYING FIRE EXITS AND EMERGENCY LIGHTING

SELSDON PRIMARY SCHOOL

Ground Floor
Block D



KEY	
FIRE EXITS	
EMERGENCY LIGHTS	

SITE MAP			
NAME	Selsdon Primary School	SITE TEL. NO.	020 8657 4038
ADDRESS	Addington Rd, South Croydon	SURVEY DATE	January 2019
	CR2 8LQ	SITE MANAGER	Scott Greenbrook

INFORMATION	
This plan is not necessarily to scale and is provided merely for reference purposes. The actual locations of individual devices are not shown on this site map – see site manager for more detailed plans.	
© 2019 Alfox Greenbrook : 07415 64867	www.alfoxgreenbrook.wixsite.com/portfolio : alfoxsgreenbrook@gmail.com

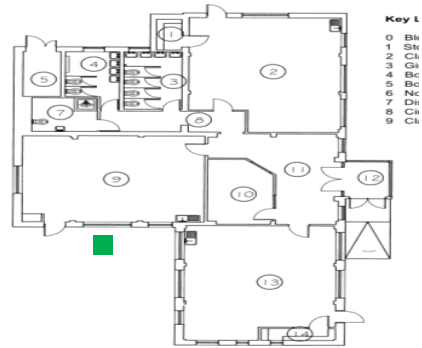
MAP DISPLAYING FIRE EXITS AND EMERGENCY LIGHTING

SELSDON PRIMARY SCHOOL

Ground Floor

SELSDON PRIMARY SCHOOL

Ground Floor
Block C

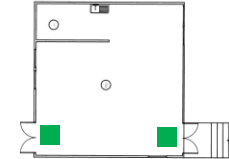


SELSDON PRIMARY SCHOOL

Ground Floor
Block B

SELSDON PRIMARY SCHOOL

Ground Floor
Block E



KEY	
	FIRE EXITS
	EMERGENCY LIGHTS

SITE MAP

NAME	Selston Primary School	SITE TEL. NO.	020 8657 4038
ADDRESS	Addington Rd, South Croydon	SURVEY DATE	January 2019
	CR2 8LQ	SITE MANAGER	Scott Greenbrook

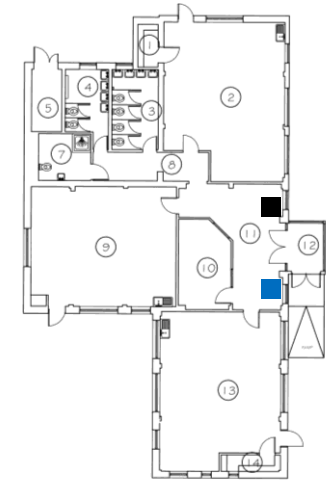
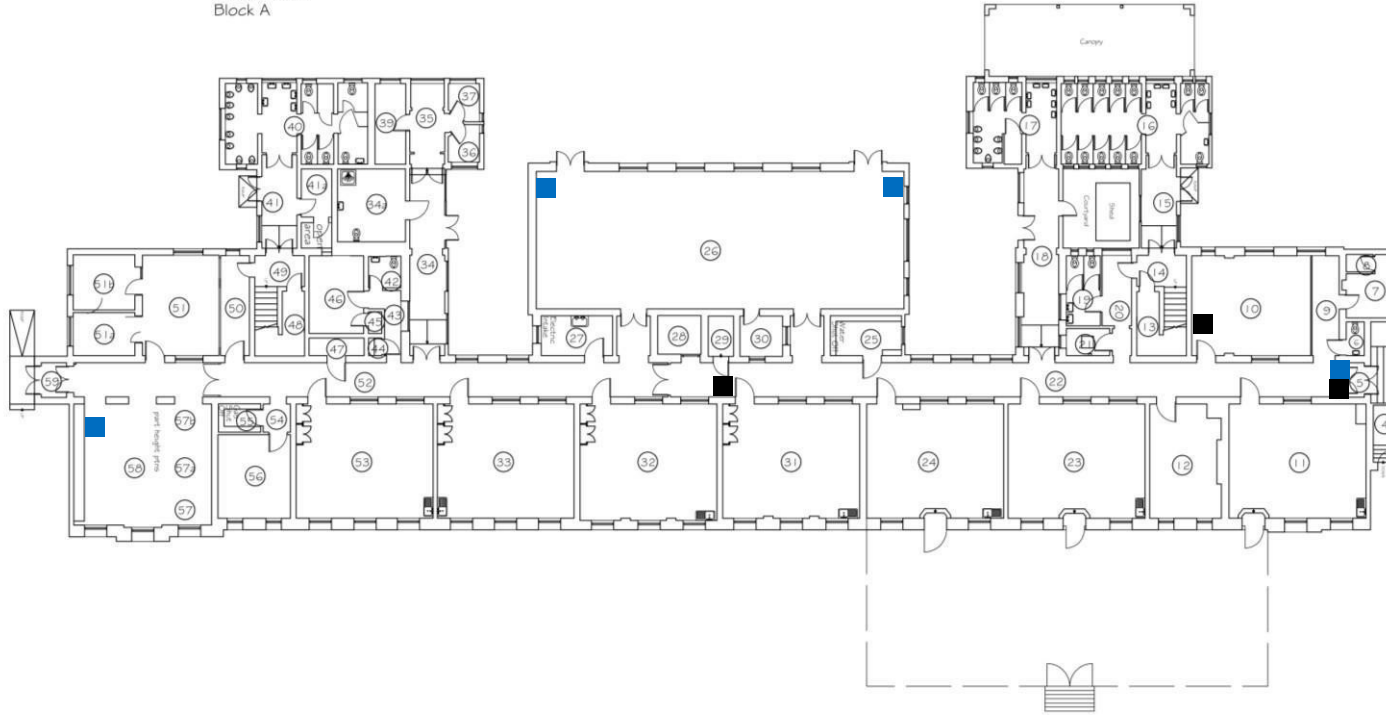
INFORMATION

This plan is not necessarily to scale and is provided merely for reference purposes. The actual locations of individual devices are not shown on this site map – see site manager for more detailed plans.
 © 2019 Alford Greenbrook : 07415 649867
 www.alfordgreenbrook.wixsite.com/portfolios : alfordsgreenbrook@gmail.com

MAP DISPLAYING FIRE EQUIPMENT

SELSDON PRIMARY SCHOOL

Ground Floor
Block A



SELSDON PRIMARY SCHOOL

Ground Floor
Block B

KEY	
	CO2 EXTINGUISHER
	WATER EXTINGUISHER

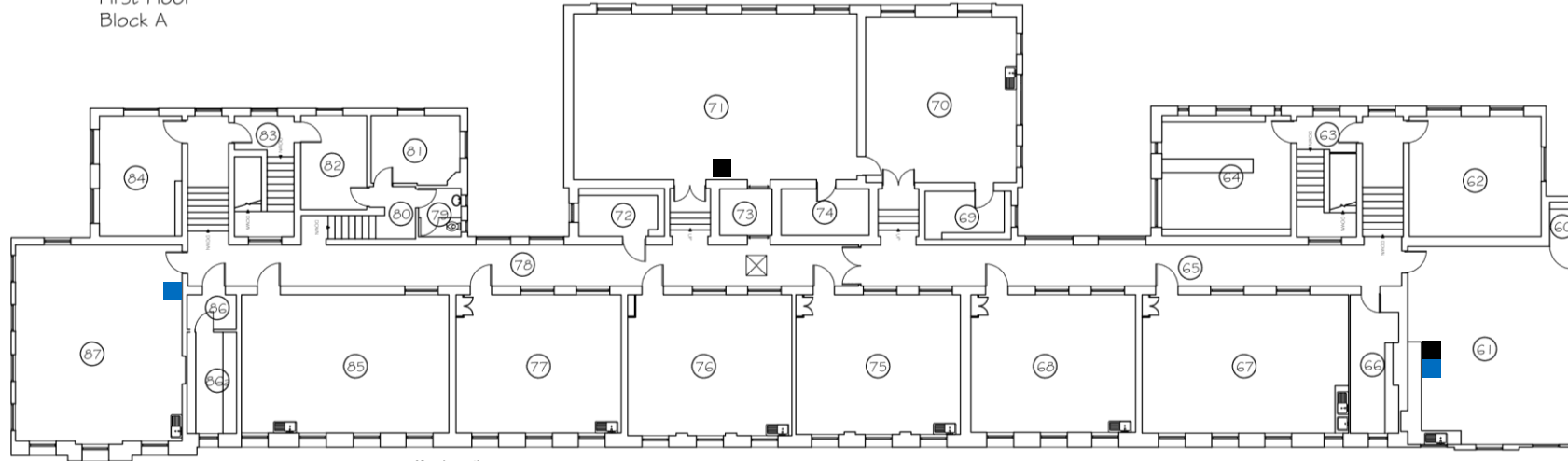
SITE MAP			
NAME	Selsdon Primary School	SITE TEL. NO.	020 8657 4038
ADDRESS	Addington Rd, South Croydon	SURVEY DATE	January 2019
	CR2 8LQ	SITE MANAGER	Scott Greenbrook

INFORMATION	
This plan is not necessarily to scale and is provided merely for reference purposes.	
The actual locations of individual devices are not shown on this site map – see site manager for more detailed plans.	
© 2019 Alton Greenbrook : 07415 64887	www.altongreenbrook.wixsite.com/portfolios : altonsgreenbrook@gmail.com

MAP DISPLAYING FIRE EQUIPMENT

SELSDON PRIMARY SCHOOL

First Floor
Block A

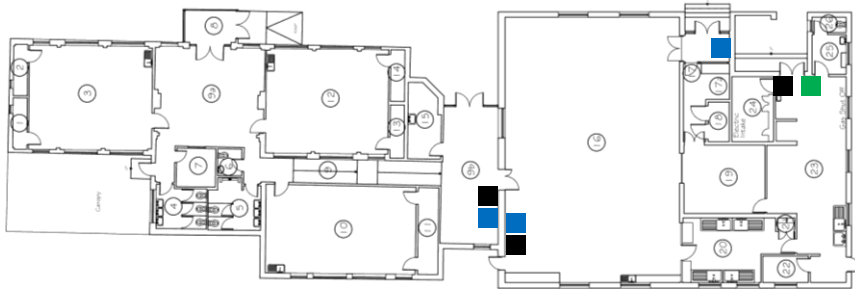


KEY	
■	CO2 EXTINGUISHER
■	WATER EXTINGUISHER

SITE MAP			
NAME	Selston Primary School	SITE TEL. NO.	020 8657 4038
ADDRESS	Addington Rd, South Croydon	SURVEY DATE	January 2019
	CR2 8LQ	SITE MANAGER	Scott Greenbrook

INFORMATION	
This plan is not necessarily to scale and is provided merely for reference purposes. The actual locations of individual devices are not shown on this site map – see site manager for more detailed plans.	
© 2019 Alford Greenbrook	www.alfordgreenbrook.wixsite.com/portfolios
: 07415 649867	: alfordsgreenbrook@gmail.com

MAP DISPLAYING FIRE EQUIPMENT

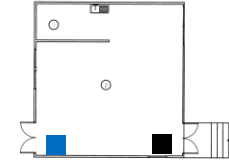


SELSDON PRIMARY SCHOOL

Ground Floor
Block C

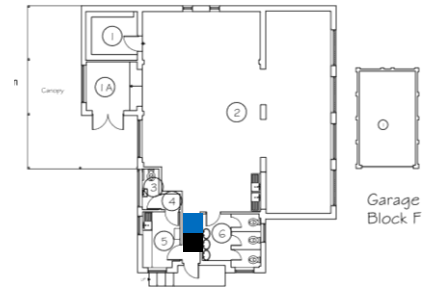
SELSDON PRIMARY SCHOOL

Ground Floor
Block E



SELSDON PRIMARY SCHOOL

Ground Floor
Block D



KEY	
	CO2 EXTINGUISHER
	WATER EXTINGUISHER
	FOAM EXTINGUISHER

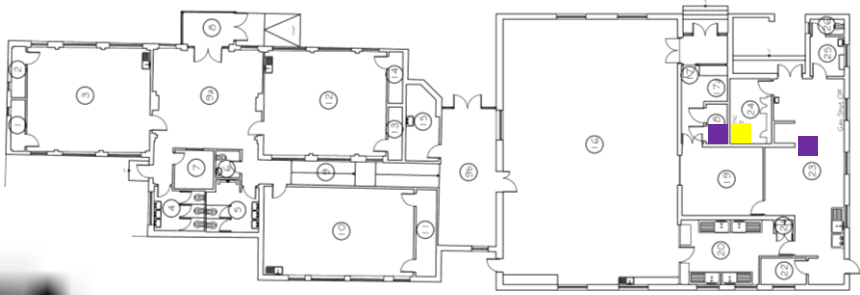
SITE MAP			
NAME	Selston Primary School	SITE TEL. NO.	020 8657 4038
ADDRESS	Addington Rd, South Croydon	SURVEY DATE	January 2019
CR2 8LQ		SITE MANAGER	Scott Greenbrook

INFORMATION	
This plan is not necessarily to scale and is provided merely for reference purposes. The actual locations of individual devices are not shown on this site map – see site manager for more detailed plans.	
© 2019 Alifhsgreenbrook : 07415 649867	www.alifhsgreenbrook.wixsite.com/portfolio : alifhsgreenbrook@gmail.com

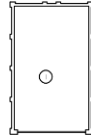
MAP DISPLAYING GAS SHUTOFF, ELECTRICAL SHUT OFF SWITCH AND

Garage




Block F



SELSDON PRIMARY SCHOOL
Ground Floor
Block C



SELSDON PRIMARY SCHOOL
Ground Floor
Garage
Block F

KEY	
	ELECTRIC SWITCH
	GAS SHUT OFF
	HAZARDOUS SUBSTANCES (PETROL)

SITE MAP			
NAME	Selsdon Primary School	SITE TEL. NO.	020 8657 4038
ADDRESS	Addington Rd, South Croydon CR2 8LQ	SURVEY DATE	January 2019
		SITE MANAGER	Scott Greenbrook

INFORMATION	
This plan is not necessarily to scale and is provided merely for reference purposes. The actual locations of individual devices are not shown on this site map – see site manager for more detailed plans.	
© 2019 Alfonso Greenbrook MOB: 07415 649867	www.alfonsogreenbrook.wixsite.com/portfolio EMAIL: alfonsogreenbrook@gmail.com